

ANLARGE COMPANY LLC

Company Profile



Table of contents

Our Story	03	CONSULTANTS	25
Our Mission	04		
Our Values	05	CONSULTANCY SERVICES	28
MANAGEMENT	07	General	28
Directors	08	Feasibility studies	28
Registration & Other Details	08	Preliminary Studies & Designs	28
Registration Documents	08	Project Development	28
Professional Indemnity	08	Technical Specifications	28
		Technical Evaluation and Audit	28
		Site Supervision	28
COMPANY ORGANOGRAM	09	Areas of Competence	29
RESOURCES	11	CLIENTS	31
Personnel	12		
Staff Training	13	PARTNERS	33
Management Information Systems	14		
		EXPERIENCE	37
KEY PERSONNEL	16	Building Projects	38
		Structural Audit Projects	50
		GALLERY	58

Your trusted partner for design and construction supervision

ANLARGE Company Limited is a Civil & Structural Engineering Firm which is purely Kenyan own company and was formed in March 2009. It was officially incorporated as a limited in September 2004 to carry out Design and supervision of projects in the fields of, structural engineering, civil engineering including water & sanitation engineering projects. We occasionally engage in roads & highway designs in partnership with other consultants. Our experience is therefore vast and spans for over 15 years

- Civil & Structural Engineering Consultancy work
- Carry out site investigations and geo-technical engineering work
- Design and Supervision of construction for Civil & Structural Engineering Projects
- Carry out all aspects of engineering audits, valuations and assessments with regards to Structural Engineering

Our Mission

Redefine structural engineering by blending traditional expertise with modern technologies. We strive to create resilient and sustainable structures that stand the test of time while meeting the evolving needs of our clients and the environment.

Our values

Excellence

We strive for excellence in every project we undertake, delivering high-quality solutions that exceed expectations.

Integrity

Integrity is the cornerstone of our business. We uphold the highest ethical standards in all our dealings, fostering trust and transparency with our clients, partners, and stakeholders

Client Satisfaction

Client satisfaction is paramount. We listen to our clients' needs, respond promptly to their concerns, and deliver tailored solutions that meet or exceed their expectations

Innovation

We embrace innovation and continually seek out new technologies and methodologies to enhance our designs and optimize project outcomes.

Sustainability

We are committed to sustainability and environmental responsibility. Our designs prioritize resource efficiency, resilience, and long-term sustainability, contributing to a greener future.

Adaptability

We are adaptable and agile in our approach. We embrace challenges with creativity and flexibility, finding effective solutions even in the face of complexity and uncertainty.

WHAT MATTERS TO US

Safety

Safety is our top priority. We prioritize the well-being of our employees, clients, and the community, adhering to the highest safety standards and practices in all our projects

Collaboration

We believe in the power of collaboration. We work closely with clients, consultants, and stakeholders to foster open communication, share expertise, and achieve mutual success.



MANAGEMENT

Directors, Registration Documents &
Professional Indemnity

Directors



Gift K. Kinuthia
BSc., MSc., PE., CE., MIEK (Technical)



Juliet G. Kinyua
BCom., CPA-K (Finance)

Registration

Certificate of incorporation No: **CPR/2014/160168**
PIN No: **P051506593S**
Physical Address: **Fatima Court-Suite 20**
Marcus Garvey Road, Nairobi
Postal address: **P.O. BOX 100** **101 Nairobi**
Telephone: **0702-776987**
E-Mail: **info@anlarge.com**

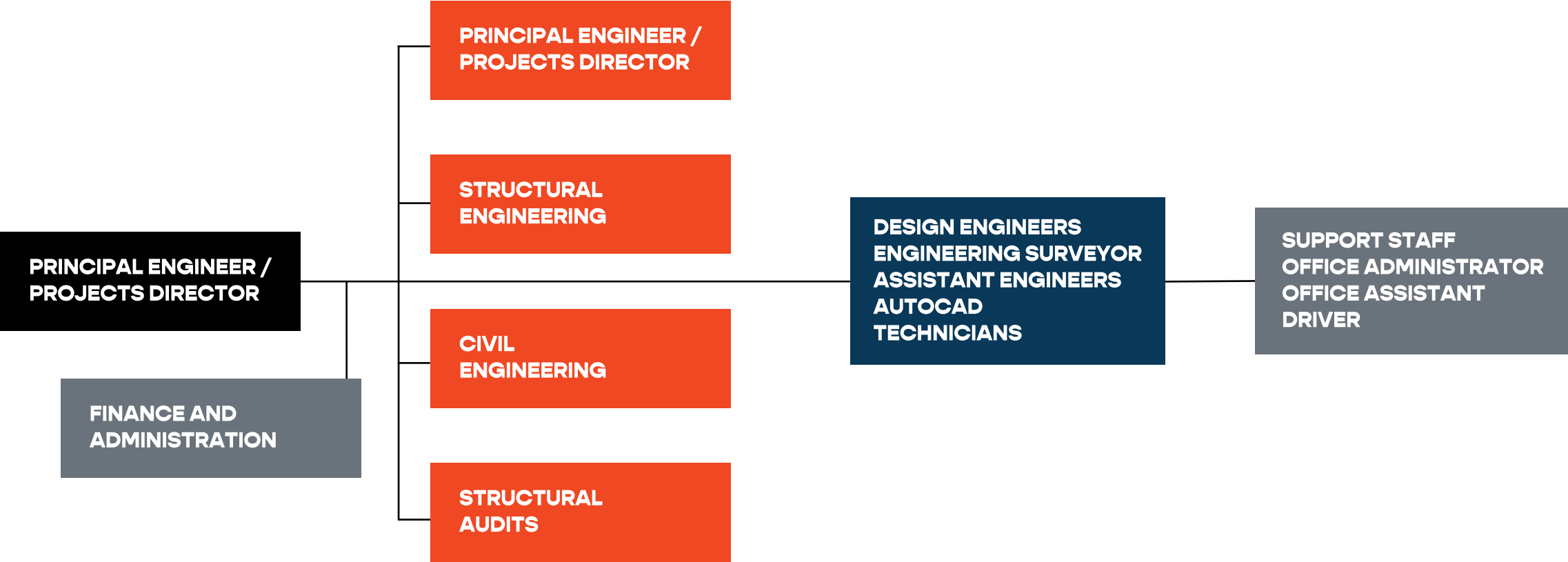
Registration Documents

The firm has the legal, trade and tax compliance registrations; the firm's Technical Director is a registered member of the Engineers Board of Kenya. The Institution of Engineers of Kenya and The Architectural Association of Kenya. The current and updated documents are always available for perusal and copies of the documents can be attached if required

Professional Indemnity

The firm provides the best cover on Professional Indemnity (PI) Insurance. The Professional Indemnity cover at the moment is for **KES 20M** with HERITAGE Insurance Company Ltd.

COMPANY ORGANOGRAM





RESOURCES

Personnel, Staff Training and
Management Information Systems

Personnel



PEng. Patrick M. Munyao
Structural Engineer



GEng. Brian Nyakundi
Structural Engineer



GEng. Fiona Kameri
Structural Engineer



Josphine Mutinda
Office Assistant

Staff Training: The firm provides continuous educational training and development for its staff. It is the firm's priority to continually install engineering software packages and programmes and continuously maintains and upgrades its computer systems. We also endeavour to admit at least one university student for attachment every year during their long vacation.



Rachel Wanjira
Admin



PEng. Henry L. Muchai Design
Structural Engineer



GEng. Evans Omondi
Assistant Design Engineer



PEng. Simon Achami
Design Civil Engineer

Management Information Systems

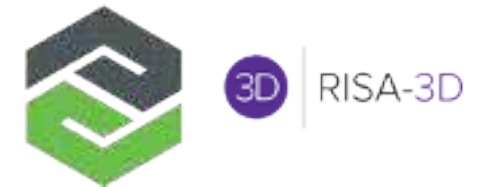
ANLARGE Company Limited realizes the importance of adapting to modern day technology in order to provide the highest level of professional services to their clients. All the firm's activities are therefore computerized. Currently, the firm's computers and associated facilities include the following:

1. 8 No. Fully loaded full time technical workstations – equipped with personal computers and / or laptops: Can be expanded as required
2. 2 No. Laser and Inkjet Printers/Plotter
3. 1 No. Heavy duty printer + scanner + photocopier
4. Fully equipped library with a collection of relevant books, manuals and periodicals. This is periodically upgraded to reflect current technology.
5. Computer programs and Software covering:

Computer aided design and Drawing (AutoCAD)
Structural Analysis and Design
Structural Analysis and Design
Civil Engineering - Roads, Water, Irrigation, and Foul Water/Sewerage
Data Management
Project Management
Document Preparations
Communications and Multimedia.



Bentley[®]



PROTA Structure 2024





KEY PERSONNEL

Eng. GIFT KINUTHIA KARANJA

TITLE OF THE PROPOSED EXPERT	TEAM LEADER - SENIOR ENGINEER
STAFF NAME:	Eng. GIFT KINUTHIA KARANJA
NATIONALITY/NATIONALITIES:	KENYAN

EDUCATIONAL INSTITUTION	DURATION OF STUDIES	DEGREE OBTAINED
University of Nairobi	2013 – 2015	MSc., Water Resources Engineering
Regional Centre for mapping of Resources for development (RCMRD), Nairobi, Kenya	2014 - 2015	Geographic Information Systems (GIS) Remote Sensing
University of Nairobi	2003 - 2008	BSc., Civil Engineering

Consulting Engineer

Engineer's Registration Board (ERB) **E545**

Corporate Member of the Institution of Engineers of Kenya (IEK) **M4621**

Corporate Member of the Architectural Association of Kenya (AAK) **E4286**



Eng. PATRICK MUNYAO

TITLE OF THE PROPOSED EXPERT	CIVIL & STRUCTURAL DESIGN ENGINEER
STAFF NAME:	PATRICK MUNYAO
NATIONALITY/NATIONALITIES:	KENYAN

EDUCATIONAL INSTITUTION	DURATION OF STUDIES	DEGREE OBTAINED
Jomo Kenyatta University of Agriculture and Technology	2012 – 2016	BSc., Civil Engineering

Graduate Engineer with Engineer's Registration Board (Kenya)
Graduate Member of the Institution of Engineers of Kenya



Eng. BRIAN NYAKUNDI

TITLE OF THE PROPOSED EXPERT	CIVIL & STRUCTURAL DESIGN ENGINEER
STAFF NAME:	BRIAN NYAKUNDI
NATIONALITY/NATIONALITIES:	KENYAN

EDUCATIONAL INSTITUTION	DURATION OF STUDIES	DEGREE OBTAINED
The Technical University of Kenya	2016 – 2021	Bachelor of Technology in Civil Engineering

Graduate Engineer with Engineer's Registration Board (Kenya)
Graduate Member of the Institution of Engineers of Kenya



Eng. FIONA W. KAMERI

TITLE OF THE PROPOSED EXPERT	CIVIL & STRUCTURAL DESIGN ENGINEER
STAFF NAME:	FIONA W. KAMERI
NATIONALITY/NATIONALITIES:	KENYAN

EDUCATIONAL INSTITUTION	DURATION OF STUDIES	DEGREE OBTAINED
The Technical University of Kenya	2016 – 2023	BSc. Civil Engineering

Graduate Engineer with Engineer’s Registration Board (Kenya)
Graduate Member of the Institution of Engineers of Kenya





CONSULTANTS

Consultant



Consultancy Services

ANLARGE Company Limited, a Kenyan firm of Consulting Engineers, has forensic, structural & civil engineering as its primary fields of competence. The firm is fully committed to the promotion and uplifting the standards of the Art & Science of Engineering. The firm strictly adheres to the ethics of the profession for the benefit of its clients. All projects benefit from our ability to both manage & contribute creatively.

Our Engineers & Consultants are all carefully selected for their expertise in one or more of the Engineering disciplines, which ensures that our clients receive prompt and professional attention. We provide each member of our team with support, motivation and the resource necessary to meet set targets.

We have the confidence to explore new & improved solutions and at all times endeavour to achieve measurable benefits to the client. Our office is fully equipped to ensure prompt & professional delivery of service in the following areas:

FEASIBILITY STUDIES

We team up with the project sponsors and other professionals in identifying the key benefits and viability of projects so that critical investment decisions are made from a fully informed position.

PRELIMINARY STUDIES & DESIGNS

As part of project teams, we study alternative design solutions in order to assist the project sponsors determine final solutions. These solutions are prepared on the basis of cost, aesthetics, space planning, site topography, geology, climate etc.

PROJECT DEVELOPMENT

Upon the project sponsors choice of solution, we utilize our extensive hands-on experience together with that of the other consultants in the construction business to develop the final project. This process involves production of Preliminary design, layouts; and Detailed Design and drawings

TECHNICAL SPECIFICATIONS

Construction specifications are produced as part of our service. These are developed in compliance with the relevant codes of practice

TECHNICAL EVALUATION AND AUDIT

We also undertake Engineering Evaluations for new and existing projects as well as Technical Audits for existing projects

SITE SUPERVISION

Our site supervision team is made up of very well trained and experienced persons. We work to ensure efficient construction, proper quality control, and best value for the project sponsors.

Areas of Competence

Our main areas of competence can be summarized as Assessment, Planning, Design and Construction Supervision of the following

Structural Engineering Projects

Structural Audits Projects- Structural Investigation, Assessment and Audits

Water Resources Projects

Water Supply Projects

Civil Infrastructure Projects

Engineering Valuations and Assessments

Site Investigations and Geotechnical Engineering work

Up to date professionalism and dependability is a core service the firm provides and maintains at all times to its client

We're engaged in designing and overseeing various building and civil engineering projects nationwide, ranging from health facilities and schools to commercial warehouses and residential complexes. Their expertise extends to forensic engineering, involving investigations into structural failures, assessments of load-carrying capacities, and structural audits using cutting-edge equipment for both non-destructive and destructive tests. They also specialize in designing wastewater treatment facilities, water retaining structures, and storage facilities, with a focus on reinforced concrete and structural steel design. The company emphasizes selecting engineers and consultants with expertise in various disciplines to ensure prompt and professional service for their clients, providing support and resources to meet project targets.



CLIENTS



ISUZU

Enashipai
Resort & Spa



REGIONAL CENTRE FOR
MAPPING OF RESOURCES
FOR DEVELOPMENT



ARCHDIOCESE OF NAIROBI



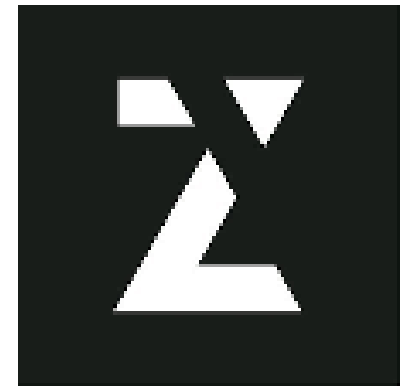
SHELTER AFRIQUE
Financing Affordable Housing for Africa



WILDLIFE CLUBS OF KENYA



PARTNERS





EXPERIENCE

Structural Engineering
Projects

PROJECT	DESCRIPTION
<p>Buruburu Housing Development TSG REALTY</p>	<p>The project involves the design and construction supervision of residential apartments comprising of:</p> <ul style="list-style-type: none"> • 5-storey 1-bedroom apartments with 140 units • 5-storey 2-bedroom apartments with 286 units • 5-storey 3-bedroom apartments with 66 units <p>The project involves the design and construction supervision of the civil works which include the following:</p> <ul style="list-style-type: none"> • Internal Roads, Drive ways and Parking Bays. This involved the design of the Sub-grade, Sub-base & base designs. • Storm water design and management for the entire site which involves design of the main storm water channels, cut-off drains, French drains etc. • Sewer Reticulation Design and Management. • Geo-technical surveys, investigations and testing • Production of construction Drawings & Details
<p>Nyali Convenience Mall TITAN ELAR INVESTMENTS LIMITED</p>	<p>The project involves the design and construction supervision of a one-story retail center comprising of retail shops, anchor tenant retail space, restaurants and other commercial spaces which in total occupy approximately 13,000 ft². The design also incorporates a fuel station canopy and tank farms.</p> <p>The project involves the design and construction supervision of the civil works which include the following:</p> <ul style="list-style-type: none"> • Internal Roads, Drive ways and Parking Bays. This involved the design of the Sub-grade, Sub-base & base designs. • Storm water design and management for the entire property which involves design of the main storm water channels, cut-off drains, French drains etc. • Sewer Reticulation Design and Management. • Geo-technical surveys, investigations and testing • Production of construction Drawings & Details

PROJECT	DESCRIPTION
<p>Panda Stoes TRECA INVESTMENTS LIMITED</p>	<p>The project involves the design and construction supervision of a retail center, service building and Gate houses which in total occupy approximately 86,000 ft². The design comprises of a steel frame structure to be supplied by a steel specialist.</p> <p>The project involves the design and construction supervision of the civil works which include the following:</p> <ul style="list-style-type: none"> • Internal Roads, Drive ways and Parking Bays. This involved the design of the Sub-grade, Sub-base & base designs. • Storm water design and management for the entire property which involves design of the main storm water channels, cut-off drains, French drains etc. • Sewer Reticulation Design and Management. • Geo-technical surveys, investigations and testing. • Production of construction Drawings & Details.
<p>143 Brookview EBOSS INVESTMENT Co. Ltd</p>	<p>The project involves the completion of the development which comprises of 89 No. town house maisonette.</p> <p>The project also involves the design and construction supervision of the civil works which include the following:</p> <ul style="list-style-type: none"> • Internal Roads, Drive ways and Parking Bays. This involved the design of the Sub-grade, Sub-base & base designs. • Storm water design and management for the entire property which involves design of the main storm water channels, cut-off drains, French drains etc. • Sewer Reticulation Design and Management. • Geo-technical surveys, investigations and testing • Production of construction Drawings & Details

PROJECT	DESCRIPTION
<p>Proposed Parts Distribution Centre ISUZU EAST AFRICA</p>	<p>The project involves the design and construction supervision of warehouses, office block, ancillary buildings and boundary walls which in total occupy approximately 161,950ft². The design comprises of a steel frame structure to be supplied by a steel specialist.</p> <p>The project involves the design and construction supervision of the civil works which include the following:</p> <ul style="list-style-type: none"> • Internal Roads, Drive ways and Parking Bays. This involved the design of the Sub-grade, Sub-base & base designs. • Storm water design and management for the entire site which involves design of the main storm water channels, cut-off drains, French drains etc. • Sewer Reticulation Design and Management. • Geo-technical surveys, investigations and testing • Production of construction Drawings & Details
<p>Galleria Mall Expansion</p>	<p>The project involves the design and construction supervision of approximately 18,011m² of additional retail/commercial space. The new spaces will accommodate a Supermarket, Fashion Anchor, Cinemas, Conferencing facilities, Line Shops, Offices, Hospital, New Craft Market, Sports Gear among other.</p> <p>The project will also involve design of the associated works including but not limited to Boundary Walls, Gate House, Underground storage tanks, service ducting etc.</p> <p>In addition, the development will have a new basement parking covering approximately 59,500 ft² to accommodate the extra traffic.</p> <p>The project will also involve the design and construction supervision of the civil works which include the following:</p> <ul style="list-style-type: none"> • Internal drive ways and Parking Bays. This involved the design of the Sub-grade, Sub-base & base designs. • Storm water design and management for the entire property which involves design of the main storm water channels, cutoff drains, French drains etc. • Sewer Reticulation Design and Management. • Geo-technical surveys, investigations and testing • Production of construction Drawings & Details

PROJECT	DESCRIPTION	
The CURVE	<p>The project involves Structural Analysis and design of two apartment blocks of 15 storeys each. The apartments are high end with a swimming pool between the ground floor and first floor level, a club house, gym. Steam and sauna and three lifts. Other structures also designed include the gate house, generator/switch room and the boundary wall. The complex also has one level basement parking. The project involves the design and construction supervision of the civil works which include the following:</p> <ul style="list-style-type: none"> • Drive ways and Parking Bays. This involved the design of the Sub-grade, Sub-base & base designs. • Storm water design and management for the entire property which involves design of the main storm water channels, cut-off drains, French drains etc. • Sewer Reticulation Design and Management. • Geo-technical surveys, investigations and testing • Production of construction Drawings & Details 	
Utawalla Shopping Complex on Plot Lr No. 6845/74, Nairobi, Nairobi	<p>The project involves the design and construction supervision of a 2-storey shopping complex comprising of retail shops. Other structures also designed include underground water tanks and a septic tank. It also involved the design of the associated civil works such as roads and storm water drainage, sewerage reticulation and connection to the septic tank and water supply.</p>	
GALLERIA GARDENS PHASE II on plot LR NO. 2248/6	<p>Structural Design:</p> <ul style="list-style-type: none"> • 8 No. Duplex Housing units (Houses 26, 27 28 & 29). • 18 No. Standard Housing units (Houses 30, 31, 32, 33, 34, 35, 36, 37, 38, 39, 40, 41, 42, 43, 44, 45, 46, & 47). • 18 No. Domestic Servants Quarters. (For Standard Units) • 22No. Refuse/Storage Building. • 10No. Boundary Wall Variations which includes Variation, A, B, C, D, G, I, L, M, N & O. • 8No. External Home Offices (For Duplex units) 	<p>Civil Design:</p> <ul style="list-style-type: none"> • Designing the Main Sewer Reticulation to Waste Water Treatment Plant. • Geometric Design of the Access Roads including all parkings' to motorable standards: Base, Sub-Base & Sub-Grade designs. • Storm Water Design and Management for all the roads including cut off drains, Flow & Channel Design, French Drains etc.

PROJECT	DESCRIPTION
<p>PROPOSED WAREHOUSES FOR SAMEER AFRICA, MOMBASA ROAD, NAIROBI COUNTY</p>	<p>The project involves the design and construction supervision of warehouses. The development comprises of:</p> <ul style="list-style-type: none"> • 7200m2 of warehouse space including mezzanine floors • Storage Tanks and the associate foundation works. • Boundary walls. <p>The project involves the design and construction supervision of the civil works which include the following:</p> <ul style="list-style-type: none"> • Internal Roads, Drive ways and Parking Bays. This involved the design of the Sub-grade, Sub-base & base designs. • Storm water design and management for the entire site which involves design of the main storm water channels, cut-off drains, French drains etc. • Sewer Reticulation Design and Management. • Geo-technical surveys, investigations and testing • Production of construction Drawings & Details
<p>543 KABARSIRAN AVE</p>	<p>The project involves Structural Analysis and design of twelve townhouses and a club house with a swimming pool. Other structures also designed include the gate house, generator/switch room and the boundary wall.</p> <p>It also involved the design of the associated civil works such as roads and storm water drainage, sewerage reticulation and connection to NWC trunk sewer and water supply and reticulation.</p>
<p>Shelter Afrique Apartments: Othaya Road., NAIROBI.</p>	<p>The project involves Structural Analysis and design of one apartment block of 16 storeys.</p> <p>The apartments are high end with a swimming pool between the ground floor and first floor level, a club house, gym. Steam and sauna and three lifts. Other structures also designed include the gate house, generator/switch room and the boundary wall.</p> <p>The complex also has two levels of parking one at the basement level and the other at the ground floor level.</p> <p>The project also involved the design of the associated civil works such as roads and storm water drainage, sewerage reticulation and connection to NWC trunk sewer and water supply and reticulation.</p>

PROJECT	DESCRIPTION
37 ON Kikambala	<p>The project involves Structural Analysis and design of eleven townhouses and a club house with a swimming pool. Other structures also designed include the gate house, generator/switch room and the boundary wall. It also involved the design of the associated civil works such as roads and storm water drainage, sewerage reticulation and connection to NWC trunk sewer and water supply and reticulation.</p>
<p>LC Waikiki Retail Store Galleria Mall</p>	<p>The project involves the design and construction supervision of approximately 8,600 ft² of extra retail space and the associated works. The Design was based on a steel frame work with a decking slab design incorporated to support the dead & live loading subjected to the building.</p> <p>The project also involved the design and construction supervision of the civil works which include the following:</p> <ul style="list-style-type: none"> • Internal drive ways and Parking Bays. This involved the design of the Sub-grade, Sub-base & base designs. • Storm water design and management. • Sewer Reticulation Design and Management. • Geo-technical surveys, investigations and testing • Production of construction Drawings & Details
<p>PZ WAREHOUSE Project For IPS</p>	<p>The project involves the design and construction supervision of warehouses and factory facilities on 16 acres out of a total of 23 acres. The development comprises of:</p> <ul style="list-style-type: none"> • 26,625m² Warehouse Space with PEB Construction Method • Boiler Setups and associated structural works. • Storage Tanks and the associate foundation works. • Cooling towers set up and associated structural/foundation works. <p>The project involves the design and construction supervision of the civil works which include the following:</p> <ul style="list-style-type: none"> • Internal Roads, Drive ways and Parking Bays. This involved the design of the Sub-grade, Sub-base & base designs. • Storm water design and management for the entire 23 acres which involves design of the main storm water channels, cut-off drains, French drains etc. • Sewer Reticulation Design and Management. • Geo-technical surveys, investigations and testing <p>Production of construction Drawings & Details</p>

PROJECT	DESCRIPTION	COST (KES)	STATUS
<p>Brookside Square Retail Centre on Brookside Drive, Nairobi County.</p>	<p>The project involves the design and construction supervision of a three-story retail center comprising of retail shops, anchor tenant retail space, restaurants and other commercial spaces.</p> <p>The design comprises of a steel frame structure to be supplied by a steel specialist.</p> <p>The project involves the design and construction supervision of the civil works which include the following:</p> <ul style="list-style-type: none"> • Internal Roads, Drive ways and Parking Bays. This involved the design of the Sub-grade, Sub-base & base designs. • Storm water design and management for the entire property which involves design of the main storm water channels, cut-off drains, French drains etc. • Sewer Reticulation Design and Management. • Geo-technical surveys, investigations and testing • Production of construction Drawings & Details 		
<p>Proposed UPENDO GOLF, mixed use development located in Tigoni, KIAMBU COUNTY.</p>	<p>UPENDO GOLF is designed to be the Ultimate Family Edutainment Hub, devoted to quality, value-anchored, yet affordable, entertainment for the whole family.</p> <p>The core offering will be a Technology Enhanced Golf Range with ancillary Leisure Services such as a Swimming Pool, Sports Bars, Trampoline Park, Pro Golf Shop, Pro Golf Simulator, Crazy / Mini Golf and Residential Housing.</p> <p>The main facility will be on an approximate 20-acre parcel of land located in Tigoni, Kiambu County. This parcel of land will house the Golf Range, Golf facility, Pro Golf Shop, a trampoline park, restaurant, sports bar and Residential Housing etc.</p>		
<p>Proposed Development of 4 Apartment Unit Blocks On L/R No. 214273, Naivasha Close, Muthaiga, NAIROBI</p>	<p>The project involves Structural Analysis and Design of eight town houses within a set of 4 blocks. It also involved the design of the associated civil works such as roads and storm water drainage, sewerage reticulation and connection to on-site waste water treatment and water supply & reticulation.</p>		

PROJECT	DESCRIPTION
Proposed town houses in Lavington for the 7th China Railway Group.	The project involves Structural Analysis and design of seven townhouses. It also involved the design of the associated civil works such as roads and storm water drainage, sewerage reticulation and connection to NWC trunk sewer and water supply and reticulation.
Infrastructure Works at 143 Brookview Estate for EBOSS INVESTMENT LIMITED in Membly Estate, Kiambu County – Phase 1	<p>This project involves the development of detailed civil works designs for plot LR NO. 7976/1. The scope of works included the design and supervision of the following infrastructure:</p> <ul style="list-style-type: none"> • 12m & 9m Road/Storm water drainage plans and detailed designs • Water Supply and Reticulation. • Sewer Reticulation plans, detailed designs and connection the mains • Geo-technical surveys, investigations and testing • Production of drawings including printing works
Proposed Factory & Warehouses on Plot LR. NO. 18474/225, ATHI RIVER, MACHAKOS COUNTY	<p>The project involves the design and construction supervision of factory facilities which include:</p> <ul style="list-style-type: none"> • 8000m2 Warehouse Space with PEB Construction Technology • 15tonne Boiler warehouse and associated structural works. • 17 No. Storage Tanks ranging from 1000ton to 250ton tanks and the associate foundation works. • Refinery set up and associated structural/foundation works. • Cooling towers set up and associated structural/foundation works. • Stearic acid towers set up and associated structural/foundation works. • Hydrogen storage set up and associated structural/foundation works. <p>The project involves the design and construction supervision of the civil works which include the following:</p> <ul style="list-style-type: none"> • 12m & 9m Road/Storm water drainage plans and detailed designs • Water Supply and Reticulation. • Sewer Reticulation plans, detailed designs and connection treatment plant • Geo-technical surveys, investigations and testing • Production of construction drawings

PROJECT	DESCRIPTION
<p>Town Houses on Plot Lr No. 182/26, Kikuyu, Kiambu County for ELENCY VILLAS</p>	<p>The project involves the design and construction supervision of factory facilities which include:</p> <ul style="list-style-type: none"> • 8000m2 Warehouse Space with PEB Construction Technology • 15tonne Boiler warehouse and associated structural works. • 17 No. Storage Tanks ranging from 1000ton to 250ton tanks and the associate foundation works. • Refinery set up and associated structural/foundation works. • Cooling towers set up and associated structural/foundation works. • Stearic acid towers set up and associated structural/foundation works. • Hydrogen storage set up and associated structural/foundation works. <p>The project involves the design and construction supervision of the civil works which include the following:</p> <ul style="list-style-type: none"> • 12m & 9m Road/Storm water drainage plans and detailed designs • Water Supply and Reticulation. • Sewer Reticulation plans, detailed designs and connection treatment plant • Geo-technical surveys, investigations and testing • Production of construction drawings
<p>Town Houses on Plot Lr No. 182/26, Kikuyu, Kiambu County for ELENCY VILLAS</p>	<p>The project involves Structural Analysis and design of No. 34 Town Houses Maisonette which in total occupy approximately 188,150ft². The project also involves the design and construction supervision of the civil works which include the following:</p> <ul style="list-style-type: none"> • Internal Roads, Drive ways and Parking Bays. This involved the design of the Sub-grade, Sub-base & base designs. • Storm water design and management for the entire property which involves design of the main storm water channels, cut-off drains, French drains etc. • Sewer Reticulation Design and Management. • Geo-technical surveys, investigations and testing • Production of construction Drawings & Details

PROJECT	DESCRIPTION
<p>Proposed Residential Development on Plot Lr No. 8392/12, Karen, Nairobi County for COPLEY TWO LIMITED</p>	<p>The project involves Structural Analysis and design of 2 storey residential building. Other structures also designed include the gate house, GYM, DSQ and a swimming pool.</p> <p>It also involved the design of the associated civil works such as roads, storm water drainage and sewerage reticulation.</p>
<p>Milele Luxury Apartments on Plot No LR No. Mn1/11518 Bamburi Mombasa for the Presbyterian Church of East Africa</p>	<p>The Project Involves the audit of existing structures and the completion of the whole development which comprises of 4No. Blocks with approximately 40 apartments units, a swimming pool and a spa facility. The Key input was on the structural design of the pending items including floor slabs, top slabs for water tanks, pool designs and the spa design.</p> <p>The project involves the design and construction supervision of the civil works which include the following:</p> <ul style="list-style-type: none"> • Internal Roads, Drive ways and Parking Bays. This involved the design of the Sub-grade, Sub-base & base designs. • Storm water design and management for the entire property which involves design of the main storm water channels, cut-off drains, French drains etc. • Sewer Reticulation Design and Management. • Geo-technical surveys, investigations and testing • Production of construction Drawings & Details
<p>Proposed Mixed Use Commercial Development along Ngong Road for Treca Limited</p>	<p>The project involves the design and construction supervision of a three-story retail center comprising of retail shops, anchor tenant retail space, restaurants and other commercial spaces which in total occupy approximately 50,000 ft²</p> <p>The design also incorporates a basement parking covering approximately 17,500 ft².</p> <p>The design comprises of a steel frame structure to be supplied by a steel specialist.</p> <p>The project involves the design and construction supervision of the civil works which include the following:</p> <ul style="list-style-type: none"> • Internal Roads, Drive ways and Parking Bays. This involved the design of the Sub grade, Sub-base & base designs. • Storm water design and management for the entire property which involves design of the main storm water channels, cut-off drains, French drains etc. • Sewer Reticulation Design and Management. • Geo-technical surveys, investigations and testing • Production of construction Drawings & Details

PROJECT	DESCRIPTION
<p>New Nakuru Garment Factory BEDI INVESTMENTS</p>	<p>The project involves the design and construction supervision of approximately 35,500 ft² of warehouse space and the associated works including but not limited to Boundary Walls, Gate House, Underground storage tanks etc.</p> <p>The project involves the design and construction supervision of the civil works which include the following:</p> <ul style="list-style-type: none"> • Internal drive ways and Parking Bays. This involved the design of the Sub-grade, Sub-base & base designs. • Storm water design and management for the entire property which involves design of the main storm water channels, cut-off drains, French drains etc. • Sewer Reticulation Design and Management. • Geo-technical surveys, investigations and testing • Production of construction Drawings & Details
<p>Proposed Langata Road Residential/ Commercial Development on plot LR NO. 2248/6 - PHASE 1</p>	<p>The project involves the construction of 25 high end maissonettes with a recreational facility which has services like a club house, gym and sauna and a fully fitted commercial kitchen.</p> <p>There is also the development of 5 office blocks each 3-storey high with a total area coverage of over 12,000 m²</p> <p>The project has very extensive civil works which includes development of the roads and associated storm water drainage, water supply and reticulation, waste water reticulation and treatment as well as clean water treatment and bulk water storage for supply.</p> <p>Our main involvement in this project was mainly on the client representation, co-ordination of the designs and overall project co-ordination & execution of the master plan.</p>
<p>Proposed Development Works for the United State International University – AFRICA (USIU)</p>	<p>The project comprised of Design, Construction Supervision of the Proposed Swimming Pool Changing Rooms, Spectators Stand and A Masonry Perimeter Wall from Borehole House to Gate B and Remodeling of the Main Gate</p>

PROJECT	DESCRIPTION
Proposed Infrastructure Development on Plot Lr. No. 7976/1, Mirema Drive, Roysambu, Nairobi	<p>This project involves the development of detailed civil works designs for plot LR NO. 7976/1. The scope of works included the design and supervision of the following infrastructure:</p> <ul style="list-style-type: none"> • 12m & 9m Road/Storm water drainage plans and detailed designs • Water Supply and Reticulation. • Sewer Reticulation plans, detailed designs and connection the mains • Geo-technical surveys, investigations and testing • Production of drawings including printing works
Proposed Holiday Homes in CHAKA, NYERI COUNTY for CHAKAVILLE LLP	<p>The project is located at CHAKA, Nyeri County and it involves constructing a Hotel with furnished new rooms, cottages, kitchen and dining, recreational facilities and conference rooms.</p> <p>The design included structural design of all building structures and also the design of all the associated civil works such as roads and storm water drainage, sewerage reticulation and connection to waste water treatment plant and water supply and reticulation were also done.</p>
Proposed Mountain View Paradise On Plot Lr. No Daiga Umando Block 1/147 (Mukima) Nanyuki, Laikipia County.	<p>The project involves Structural Analysis and design of the Apartments blocks comprising of about 340 fully serviced units and an additional ground floor parking and a swimming pool.</p> <p>The design of all the associated civil works such as roads and storm water drainage, sewerage reticulation and connection to waste water treatment plant and water supply and reticulation were also done.</p>
Proposed Eseriani Hotel, Naivasha	<p>The project is located at Naivasha and it involves constructing new rooms, cottages, kitchen and dining, recreational facilities and conference rooms. The design included structural design of all building structures and also the design of all the associated civil works such as roads and storm water drainage, sewerage reticulation and connection to waste water treatment plant and water supply and reticulation were also done</p>
Proposed Bustani Court - Townhouses in kitengela town, Kajiado County for Mr. Moses Munga	<p>The project involves Structural Analysis and design of eight townhouses. It also involved the design of the associated civil works such as roads and storm water drainage, sewerage reticulation and connection to NWC trunk sewer and water supply and reticulation.</p>

PROJECT	DESCRIPTION
Proposed apartments at Pangani, Nairobi on Ir. No. 209/2389/16 for Exclusive Living East Africa Ltd.	Structural Analysis and design of the 10 storey Residential Commercial Building with a one level basement including design of all the associated civil works such as roads and storm water drainage, sewerage reticulation and connection to NWC trunk sewer and water supply and reticulation.
Proposed Residential Development in Karen On Plot Lr No 1160/218 for Steffen Rottcher	The project involves Structural Analysis and design of three townhouses. Other structures also designed include the gate house, generator/switch room and the boundary wall. It also involved the design of the associated civil works such as roads and storm water drainage, sewerage reticulation and connection to waste water treatment plant and water supply and reticulation.
Proposed Shops on Plot Lr. No. 209/136/189 Kirinyaga Road, Nairobi.	The project involves Structural Analysis and design of the 5 storey Commercial Building with a one level basement including design of all the associated civil works such as roads and storm water drainage, sewerage reticulation and connection to NWC trunk sewer and water supply and reticulation.
Proposed Office Block Development on Plot No.5745 in Ruiru	The project involves Structural Analysis and Design of the 4 storey building to be the office headquarters for the Good Neighbors Organization. The scope of works also included design of all the associated civil works such as roads and storm water drainage, sewerage reticulation and connection to bio-digester system and water supply & reticulation.
Proposed Primary School Development on Plot No.142 In Dandora	The project involves Structural Analysis and Design of the 4 storey primary school building including design of all the associated civil works such as roads and storm water drainage, sewerage reticulation and connection to bio-digester system and water supply & reticulation.
Proposed Residential Development on Lr. No. 12882/48 In Karen for Nagemi	Structural Analysis and design of a town House located in Karen including design of all the associated civil works such as roads and storm water drainage, sewerage reticulation and connection to NWC trunk sewer and water supply and reticulation.
Proposed Dormitory, Kitchen and Dining Facilities for the Wildlife Club of Kenya	Structural Analysis and design of 5No. Dormitories, a kitchen & Dining Hall and several storage spaces including design of all the associated civil works such as roads and storm water drainage, sewerage reticulation and connection to NWC trunk sewer and water supply and reticulation.
Proposed Residential House in Runda On Lr No. 12672/197 for Mr. Mwangi	Structural Analysis and design of a Town House Villa including design of all the associated civil works such as roads and storm water drainage, sewerage reticulation and connection to NWC trunk sewer and water supply and reticulation.

PROJECT	DESCRIPTION
Proposed Residential Development in Lavington for Boffar Limited	Structural Analysis and design of a town House located in Lavington including design of all the associated civil works such as roads and storm water drainage, sewerage reticulation and connection to NWC trunk sewer and water supply and reticulation.
Proposed Residential Villa & Guest House for Mr. Bong Yoon on Plot No. 7785/1447, Runda, Nairobi	Structural Analysis and design of a Town House Villa including design of all the associated civil works such as roads and storm water drainage, sewerage reticulation and connection to NWC trunk sewer and water supply and reticulation.
The Courtyard on Vanga Road on Plot LR NO. 330/152, Nairobi. (In association with Frame Consultants Ltd.)	The project involves Structural Analysis and design of the Apartments blocks, ground floor parking and a swimming pool including the design of all the associated civil works such as roads and storm water drainage, sewerage reticulation and connection to NWC trunk sewer and water supply and reticulation.
The Loft on Plot LR No.1/1274 on Wood Avenue Nairobi. (In association with Frame Consultants Ltd.)	Structural Analysis and design of the 12 storey Residential Commercial Building with a one level basement including design of all the associated civil works such as roads and storm water drainage, sewerage reticulation and connection to NWC trunk sewer and water supply and reticulation.
Residential development on Plot LR No.209/1731/1 on Denis Pritt Road, Nairobi. (In association with Frame Consultants Ltd.)	Structural Analysis and design of the Apartments (20 No.) including design of all the associated civil works such as roads and storm water drainage, sewerage reticulation and connection to NWC trunk sewer and water supply and reticulation.
Residential development for Africa Reit Ltd, on Plot LR No.1/153 Wood Avenue Nairobi. (In association with Frame Consultants Ltd.)	Structural Analysis and design of the Apartments (24 No.) including design of all the associated civil works such as roads and storm water drainage, sewerage reticulation and connection to NWC trunk sewer and water supply and reticulation.



STRUCTURAL AUDIT PROJECTS

PROJECT	DESCRIPTION		
<p>African Gas & Oil Company Limited, Mombasa</p>	<p>This project involved carrying out a structural audit through destructive and non-destructive tests on the existing structural elements. Visual inspection, Concrete Core Cutting, Ferroskan tests and Schmidt Hammer tests were carried out.</p> <p>The scope involved:</p> <ul style="list-style-type: none"> • Carrying out destructive and non-destructive tests of the structural elements. • Preparation of a report with recommendations. <p>The tests were carried out to determine the following parameters:</p> <ul style="list-style-type: none"> • In-situ strength of concrete used in the existing structural elements through the use of a Schmidt Hammer and Concrete Core Cutting. • Cover to reinforcement of the existing structural elements through the use of a Ferroskan. • Rebar positions of the existing structural elements through the use of a Ferroskan. • Resistance of the insitu subsurface material supporting the foundations through the use of the Dynamic Core Penetration test. 		
<p>Blue Shield Towers for Blue Shield Insurance Co. Ltd, Upper Hill, Nairobi</p>	<p>This project involved carrying out a structural audit through visual inspection of the structural elements as well as taking physical measurements on site of the structural elements.</p> <p>The scope involved:</p> <ul style="list-style-type: none"> • Carrying out a visual inspection and non-destructive tests of the structural elements. • Preparation of a report with recommendations. <p>The visual inspection was done to determine the following defects evident on the building:</p> <ul style="list-style-type: none"> • Causes of water leakage from concrete roof gutters. • Causes of water leakage from iron sheet roof. • Causes of water leakage on windows. 		
<p>Blue Shield Towers for Blue Shield Insurance Co. Ltd, Upper Hill, Nairobi</p>	<p>This project involved carrying out a visual inspection and taking measurements of the structural elements.</p> <table border="0" data-bbox="733 1072 2372 1296"> <tr> <td data-bbox="733 1072 1352 1218"> <p>The scope involved:</p> <ul style="list-style-type: none"> • Carrying out a visual inspection of the structural elements. • Preparation of a report with recommendations. </td> <td data-bbox="1403 1072 2372 1296"> <p>The visual inspection and measurements were done to determine the following defects evident on the building:</p> <ul style="list-style-type: none"> • Cause of settlement of the external paved surfaces. • Cause of cracks on existing structural elements through measuring the widths of the cracks and installing crack monitors • Cause of moisture ingress in the building's walls and structural elements. </td> </tr> </table>	<p>The scope involved:</p> <ul style="list-style-type: none"> • Carrying out a visual inspection of the structural elements. • Preparation of a report with recommendations. 	<p>The visual inspection and measurements were done to determine the following defects evident on the building:</p> <ul style="list-style-type: none"> • Cause of settlement of the external paved surfaces. • Cause of cracks on existing structural elements through measuring the widths of the cracks and installing crack monitors • Cause of moisture ingress in the building's walls and structural elements.
<p>The scope involved:</p> <ul style="list-style-type: none"> • Carrying out a visual inspection of the structural elements. • Preparation of a report with recommendations. 	<p>The visual inspection and measurements were done to determine the following defects evident on the building:</p> <ul style="list-style-type: none"> • Cause of settlement of the external paved surfaces. • Cause of cracks on existing structural elements through measuring the widths of the cracks and installing crack monitors • Cause of moisture ingress in the building's walls and structural elements. 		

PROJECT	DESCRIPTION
Kileleshwa Apartments for Detiland Company Limited, Nairobi	<p>This project involved:</p> <ul style="list-style-type: none"> • Carrying out a visual inspection of ongoing construction works and taking measurements of the structural elements already constructed. • Doing design checks to establish the adequacy of structural members provided vis a vie the construction drawings on site. • Preparation of a report with recommendations
8545 Kirichwa Creek Villas, Kileleshwa, Nairobi	<p>This project involved carrying out a visual inspection and measurements of the structural elements.</p> <p>The scope involved:</p> <ul style="list-style-type: none"> • Carrying out a visual inspection of the structural elements. • Preparation of a report with recommendations. <p>The visual inspection and measurements were done to determine the following defects evident on the building:</p> <ul style="list-style-type: none"> • Cause of cracks on existing structural elements through measuring the widths of the cracks and installing crack monitors.
Double Storey Residential House, Karen, Nairobi	<p>This project involved carrying out a visual inspection and measurements of the structural elements.</p> <p>The scope involved:</p> <ul style="list-style-type: none"> • Carrying out a visual inspection of the structural elements. • Preparation of a report with recommendations. The visual inspection and measurements were done to determine the following defects evident on the building: • Cause of cracks and settlement on walls and ground floor slab.
Regional Centre for Mapping for Resource Development Complex, Kasarani, Nairobi	<p>This project involved carrying out a visual inspection and measurements of the structural elements.</p> <p>The scope involved:</p> <ul style="list-style-type: none"> • Carrying out a visual inspection of the structural elements. • Auditing already done structural designs and calculations. • Preparation of a report with recommendations. <p>The visual inspection, design checks and measurements were done to countercheck pre-tender structural designs and ascertain their adequacy for implementation in construction.</p>

ROOF STRUCTURAL AUDITS FOR CP SOLAR RESOURCES LTD

In an attempt to reduce the carbon print on the atmosphere we have partnered with CP Solar Resources Ltd that installs solar powered systems that aid in the reduction in the use of hydroelectric power supplied from the main grid in Kenya. Our involvement in this exercise has aided in the cumulative installation of solar powered systems totaling to almost 4 Megawatts. The scope of our structural audit involvement includes:

- Carrying out site measurements of existing roof structures.
- Carrying out non-destructive tests.
- Carrying out visual inspections of the existing roof structures to identify defects.
- Simulation of the existing roof designs to determine capacity to support installation of solar panels.

Projects we have audited their roof structures are as follows: • Preparation of reports with recommendations. • Carrying out site visits and supervising installation works.

1	Nails & Steel Products Ltd, Industrial Area, Nairobi	20	Mill Bakers Ltd, Ruiru, Kiambu
2	Proplast Ltd, Industrial Area, Nairobi	21	Rok Industries Ltd, Industrial Area, Nairobi
3	PJ Dave, Isinya, Kajiado	22	Kenafric Manufacturing Ltd, Baba Dogo, Nairobi
4	Blue Nile Rolling Mills Ltd, Thika	23	Laboratory & Allied Ltd, Mombasa Road, Nairobi
5	Kapa Oil Refineries Ltd, Mombasa Road, Nairobi	24	Polyflex Industries Ltd, Industrial Area, Nairobi
6	Kentons Ltd, Kisumu	25	Mombasa Maize Miller Ltd, Mombasa
7	DPL Festive Ltd, Industrial Area, Nairobi	26	Silafrica Kenya Ltd, Industrial Area, Nairobi
8	Maridadi Flowers Ltd, Naivasha	27	Kenafric Industries Ltd, Baba Dogo, Nairobi
9	Techpak Industries Ltd, Industrial Area, Nairobi	28	Cosmos Pharmaceutical Ltd, Industrial Area, Nairobi
10	Thames Electricals Ltd, Industrial Area, Nairobi	29	Vivo Energy Nairobi Terminus, Industrial Area, Nairobi
11	Hope Plastics Ltd, Thika		
12	Paper Converters (K) Ltd, Industrial Area, Nairobi		
13	Buyline Industries Ltd, Mombasa Road, Nairobi		
14	Crown Paints Kenya PLC, Industrial Area, Nairobi		
15	Nakuru Industries Ltd, Nakuru		
16	Bioline Laboratories Ltd, Industrial Area, Nairobi		
17	Dubois Beauty, Nairobi		
18	Shreeji Chemical Ltd, Mariakani, Mombasa		
19	Mill Bakers Ltd, Ruiru, Kiambu		



GALLERY



Buruburu Housing Development TSG REALTY



Nyali Convenience Mall TITAN ELAR INVESTMENTS LIMITED



PANDA STORES TRECA INVESTMENTS LIMITED



Proposed UPENDO GOLF, mixed use development located in Tigoni, KIAMBU COUNTY.





Proposed Parts Distribution Centre ISUZU EAST AFRICA



Galleria Mall Expansion



The CURVE



Utawalla Shopping Complex on Plot Lr No. 6845/74, Nairobi, Nairobi



New Davis and Shirliff Engineering Centre of Excellence at Tatu City.



GALLERIA GARDENS PHASE II on plot LR NO. 2248/6



PROPOSED WAREHOUSES FOR SAMEER AFRICA, MOMBASA ROAD, NAIROBI COUNTY.



543 KABARSIRAN AVE



Shelter Afrique Apartments: Othaya Road., NAIROBI.





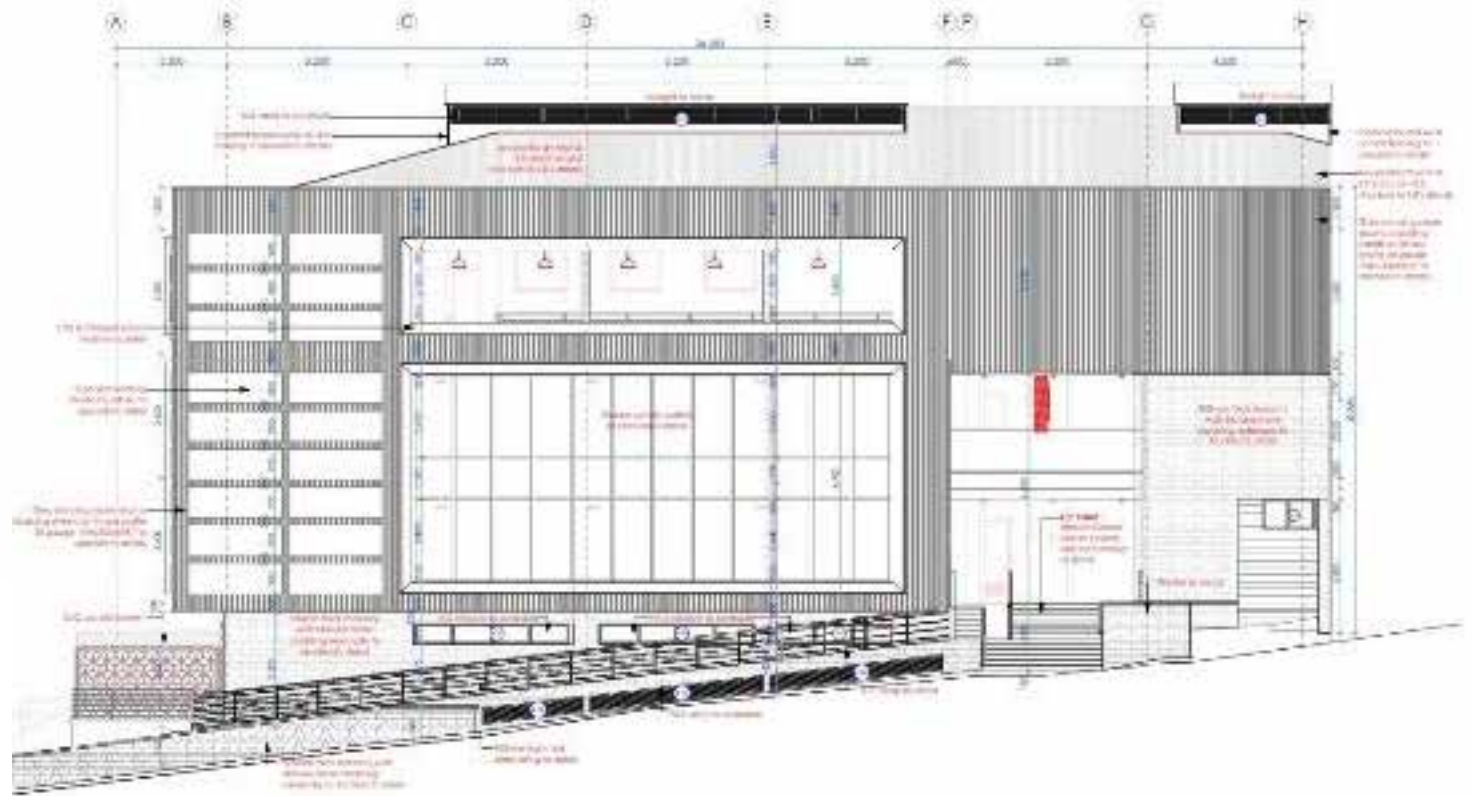
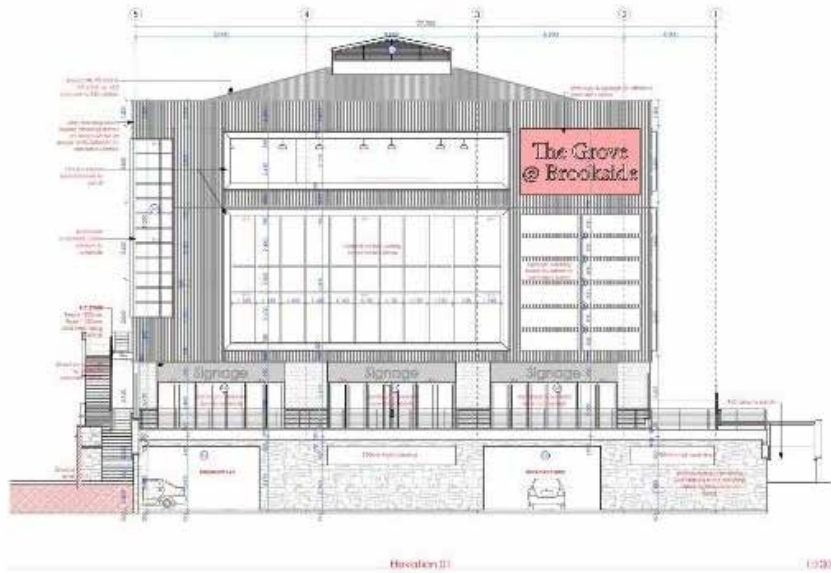
Proposed townhouses on plot Kirichwa Creek, Kileleshwa – Nairobi.



LC Waikiki Retail Store Galleria Mall



EPZ WAREHOUSE Project For IPS



Brookside Square Retail Centre on Brookside Drive, Nairobi County.



Proposed Development of 4 Apartment Unit Blocks On L/R No. 214273, Naivasha Close, Muthaiga, NAIROBI



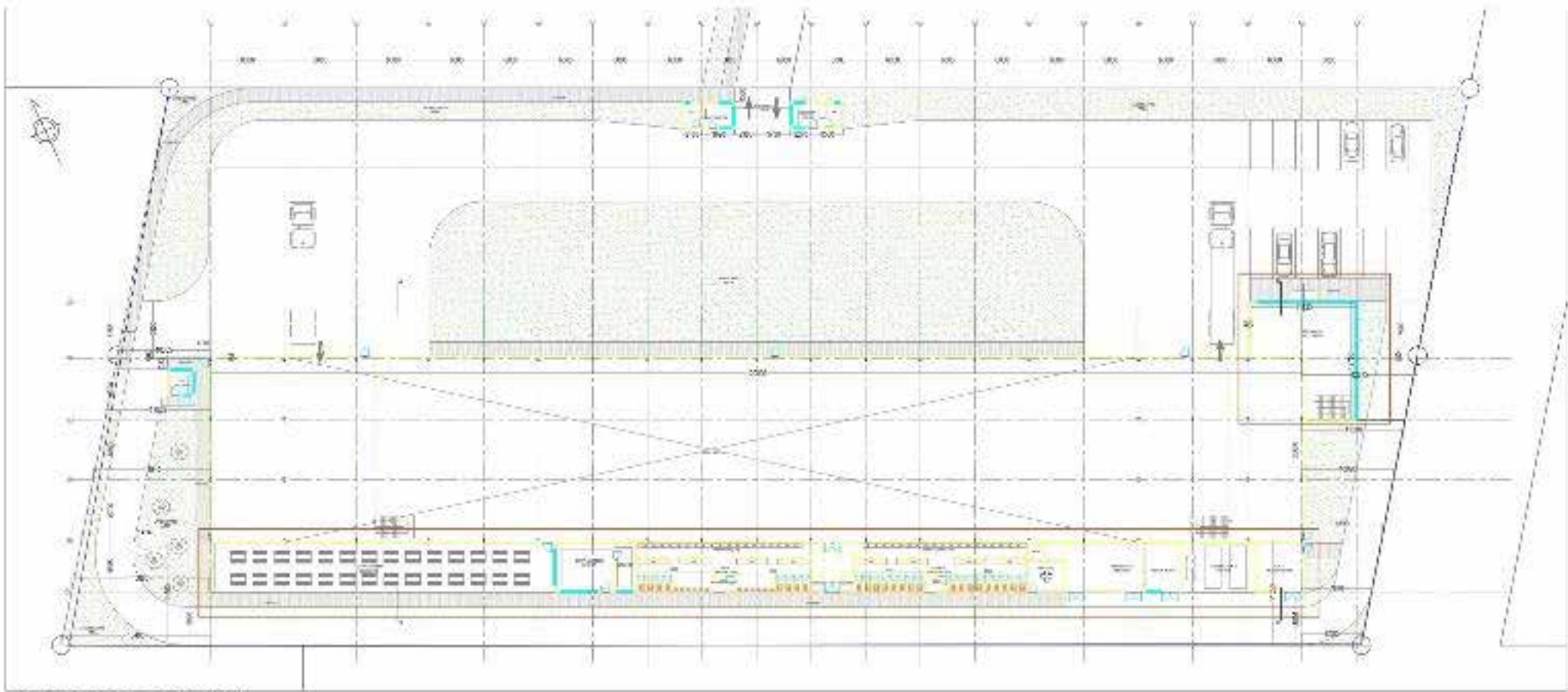
Infrastructure Works at 143 Brookview Estate for EBOSS INVESTMENT LIMITED in Membly Estate, Kiambu County – Phase 1



Proposed town houses in Lavington for the 7th China Railway Group.



Proposed Factory & Warehouses on Plot LR. NO. 18474/225, ATHI RIVER, MACHAKOS COUNTY



GROUND FLOOR AND SITE LAYOUT

Thank you.